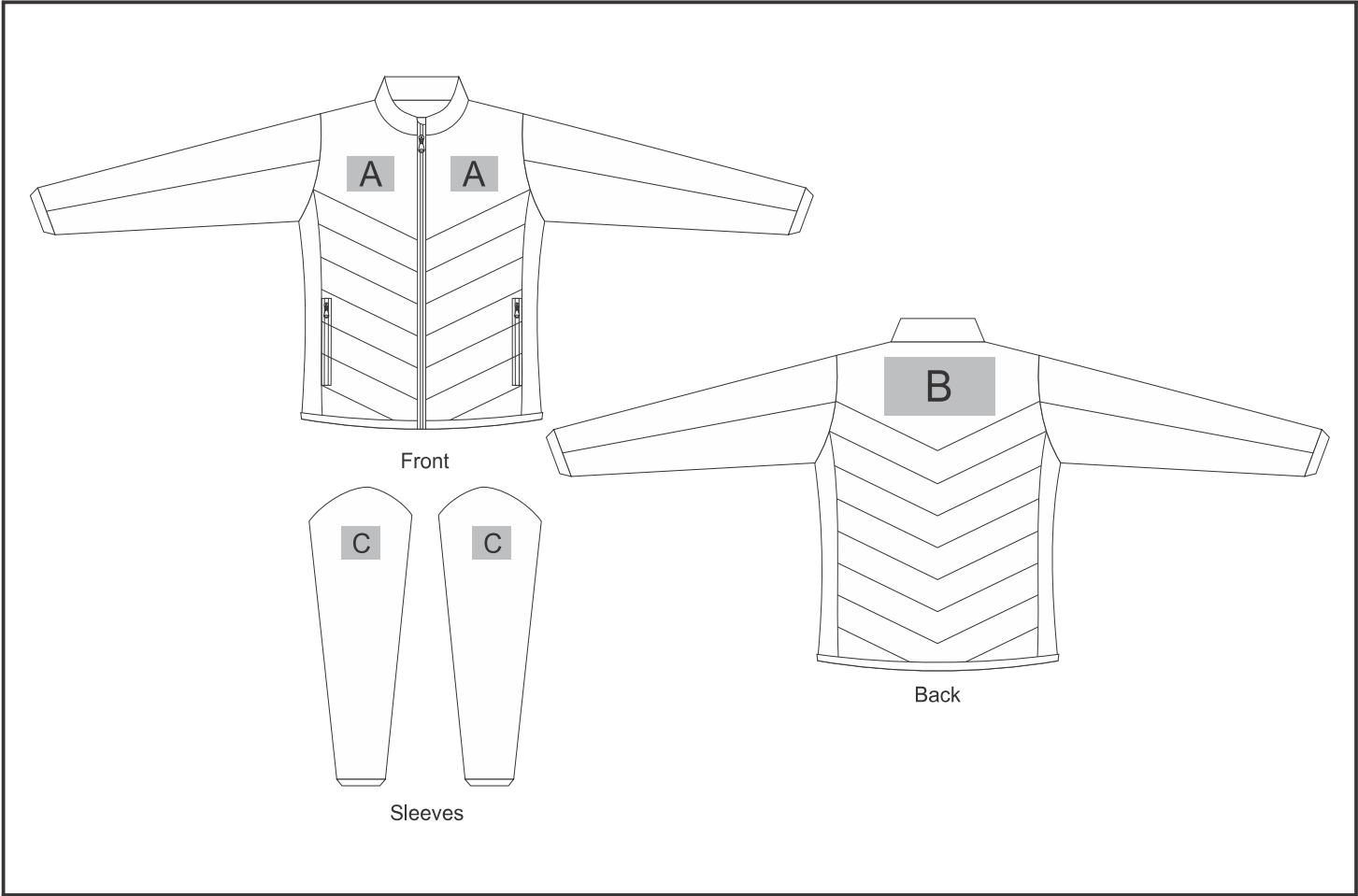


ALT-ANL

Ladies Andes Jacket



Need to know:

- Includes 1-Position Digital Transfer (setup fee applies)
- **DTC inclusive parameters:** Left/Right Chest or Back = 100mm x 100mm
- **NB:** Inclusive Branding is NOT applicable to Items marked as Reduced to Clear.

Branding Options:

Position	Branding Method (Branding Code)	No. of Colours	Dimension
A	Embroidery (EMB-A)	N/A	100mm wide x 100mm high
A	Digital Transfer Clothing A6 (DTC-A6)	Full Colour	100mm wide x 100mm high

B	Embroidery (EMB-A)	N/A	200mm wide x 130mm high
B	Digital Transfer Clothing A6 (DTC-A6)	Full Colour	148mm wide x 105mm high
B	Digital Transfer Clothing A5 (DTC-A5)	Full Colour	210mm wide x 148mm high
B	Digital Transfer Clothing A4 (DTC-A4)	Full Colour	290mm wide x 130mm high

C	Embroidery (EMB-A)	N/A	80mm wide x 60mm high
C	Digital Transfer Clothing A6 (DTC-A6)	Full Colour	80mm wide x 80mm high