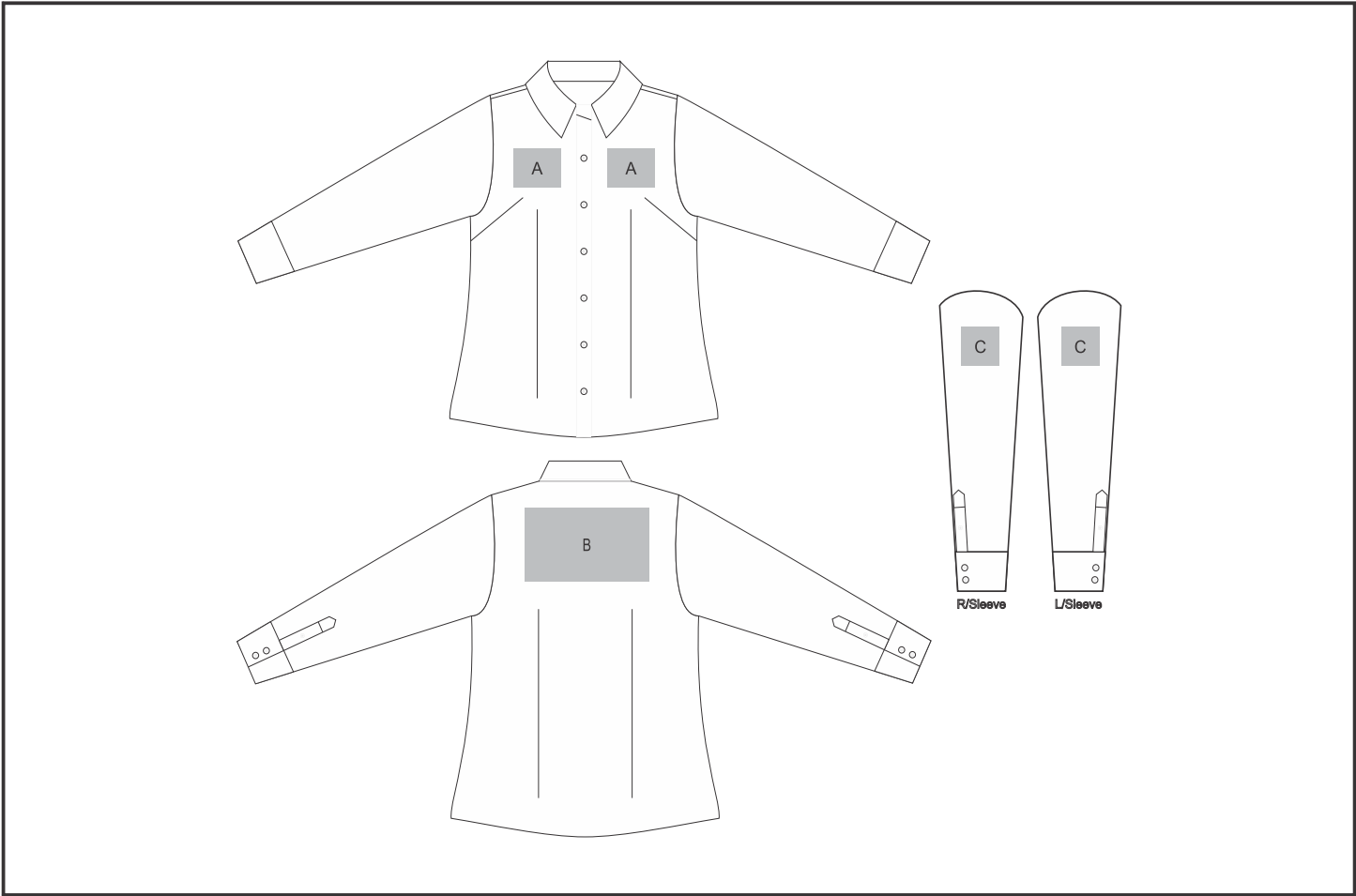


# ALT-EPLL

## Ladies Long Sleeve Empire Shirt



### Need to know:

- Includes 1-Position Digital Transfer (setup fee applies)
- Cannot guarantee a 100% straight branding on any clothing item with check or stripe detail
  - **DTC/EMB inclusive Parameters:** Left/Right Chest or Back = 100mm x 100mm
  - NB: Inclusive Branding is NOT applicable to Items marked as Reduced to Clear.

### Branding Options:

Position	Branding Method (Branding Code)	No. of Colours	Dimension
A	Embroidery (EMB-A)	N/A	100mm wide x 80mm high
A	Screen Print (SA)	1 Colour	100mm wide x 80mm high
A	Digital Transfer Clothing A6 (DTC-A6)	Full Colour	100mm wide x 80mm high
A	Silicone (STP-A)	N/A	30mm wide x 30mm high
A	Silicone (STP-B)	N/A	50mm wide x 50mm high
A	Silicone (STP-C)	N/A	80mm wide x 80mm high
A	Silicone (STP-D)	N/A	100mm wide x 40mm high

B	Embroidery (EMB-A)	N/A	200mm wide x 200mm high
---	--------------------	-----	-------------------------

B	Screen Print (SA)	1 Colour	260mm wide x 150mm high
B	Digital Transfer Clothing A6 (DTC-A6)	Full Colour	148mm wide x 105mm high
B	Digital Transfer Clothing A5 (DTC-A5)	Full Colour	210mm wide x 148mm high
B	Silicone (STP-A)	N/A	30mm wide x 30mm high
B	Silicone (STP-B)	N/A	50mm wide x 50mm high
B	Silicone (STP-C)	N/A	80mm wide x 80mm high
B	Silicone (STP-D)	N/A	120mm wide x 40mm high

C	Embroidery (EMB-A)	N/A	80mm wide x 60mm high
C	Screen Print (SA)	1 Colour	60mm wide x 60mm high
C	Digital Transfer Clothing A6 (DTC-A6)	Full Colour	80mm wide x 80mm high
C	Silicone (STP-A)	N/A	30mm wide x 30mm high
C	Silicone (STP-B)	N/A	50mm wide x 50mm high
C	Silicone (STP-C)	N/A	80mm wide x 80mm high