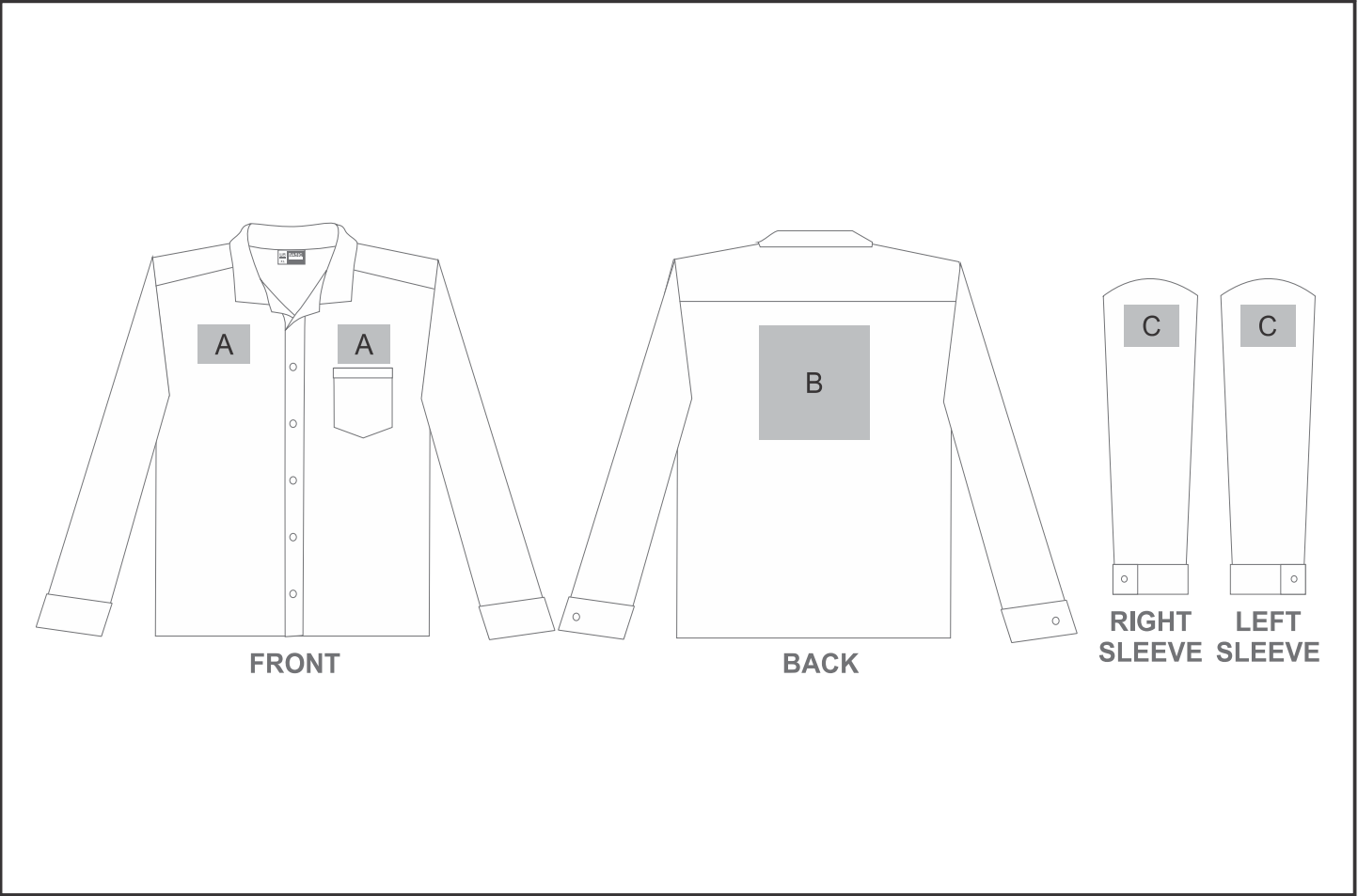


BAS-810

Mens Long Sleeve Aspen Shirt



Need to know:

Includes 1-Position Embroidery OR 1 Position Digital Transfer (setup fee applies)
- Cannot guarantee a 100% straight branding on any clothing item with check or stripe detail
- **EMB/DTC inclusive Parameters:** Left/Right Chest OR Back =100mm x 100mm

Branding Options:

| Position | Branding Method (Branding Code) | No. of Colours | Dimension |
|----------|---------------------------------------|----------------|-------------------------|
| A | Embroidery (EM-CLOTHING) | N/A | 100mm wide x 100mm high |
| A | Screen Print (SC) | 6 Colours | 100mm wide x 80mm high |
| A | Digital Transfer Clothing A6 (DTC-A6) | Full Colour | 100mm wide x 100mm high |
| A | Silicone (STP-A) | N/A | 30mm wide x 30mm high |
| A | Silicone (STP-B) | N/A | 50mm wide x 50mm high |
| A | Silicone (STP-C) | N/A | 80mm wide x 80mm high |
| A | Silicone (STP-D) | N/A | 100mm wide x 40mm high |
| B | Embroidery (EM-CLOTHING) | N/A | 200mm wide x 200mm high |

| | | | |
|---|---------------------------------------|-------------|-------------------------|
| B | Screen Print (SC) | 6 Colours | 200mm wide x 200mm high |
| B | Digital Transfer Clothing A6 (DTC-A6) | Full Colour | 105mm wide x 148mm high |
| B | Digital Transfer Clothing A5 (DTC-A5) | Full Colour | 210mm wide x 148mm high |
| B | Silicone (STP-A) | N/A | 30mm wide x 30mm high |
| B | Silicone (STP-B) | N/A | 50mm wide x 50mm high |
| B | Silicone (STP-C) | N/A | 80mm wide x 80mm high |
| B | Silicone (STP-D) | N/A | 120mm wide x 40mm high |

| | | | |
|---|---------------------------------------|-------------|-----------------------|
| C | Embroidery (EM-CLOTHING) | N/A | 80mm wide x 60mm high |
| C | Screen Print (SC) | 6 Colours | 60mm wide x 60mm high |
| C | Digital Transfer Clothing A6 (DTC-A6) | Full Colour | 80mm wide x 80mm high |
| C | Silicone (STP-A) | N/A | 30mm wide x 30mm high |
| C | Silicone (STP-B) | N/A | 50mm wide x 50mm high |
| C | Silicone (STP-C) | N/A | 80mm wide x 80mm high |