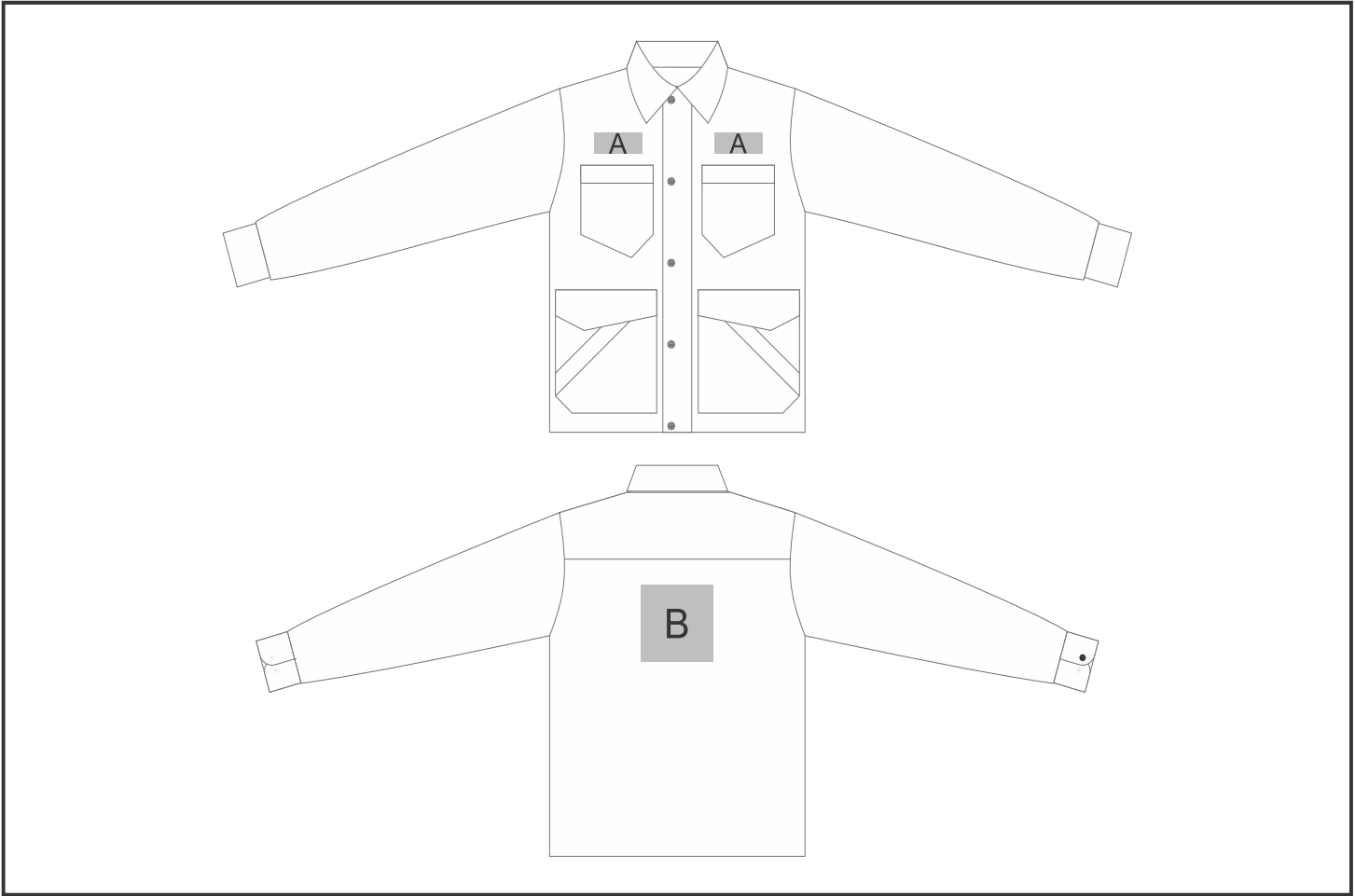


JC-UT-141-A

Ladies Maluti Jacket



Need to know:

- Includes 1-Position Embroidery (setup fees apply)
- **EMB Inclusive Parameters:** Left/Right Chest or Back = 100mm x 100mm.
- Texture of Item will affect the quality of Screen Print.

Branding Options:

Position	Branding Method (Branding Code)	No. of Colours	Dimension
A	Embroidery (EM-CLOTHING)	N/A	100mm wide x 20mm high
A	Screen Print (SB)	1 Colour	60mm wide x 40mm high
B	Embroidery (EM-CLOTHING)	N/A	150mm wide x 150mm high